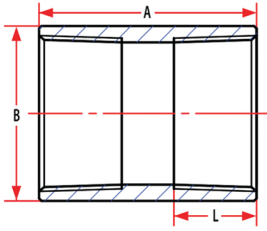


MSS-SP114 HEAVY PATTERN STAINLESS STEEL FITTINGS

FULL COUPLINGS

| Item ID 304 | Item ID 316 | Size | Pkg Qty | Approx Weight | A | B | L |
|----------------|----------------|--------|------------|------------------|------|------|------|
| SS304-64001 | SS316-64001 | 1/8" | 25 | 0.0476 | 0.95 | 0.59 | 0.25 |
| SS304-64002 | SS316-64002 | 1/4" | 25 | 0.0772 | 1.08 | 0.72 | 0.32 |
| SS304-64003 | SS316-64003 | 3/8" | 25 | 0.0882 | 1.11 | 0.86 | 0.37 |
| SS304-64004 | SS316-64004 | 1/2" | 25 | 0.1389 | 1.38 | 1.02 | 0.42 |
| SS304-64006 | SS316-64006 | 3/4" | 25 | 0.2584 | 1.60 | 1.29 | 0.50 |
| SS304-64010 | SS316-64010 | 1" | 25 | 0.4167 | 1.78 | 1.59 | 0.58 |
| SS304-64012 | SS316-64012 | 1 1/4" | 10 | 0.5489 | 1.99 | 1.91 | 0.66 |
| SS304-64014 | SS316-64014 | 1 1/2" | 10 | 0.8300 | 2.15 | 2.22 | 0.69 |
| SS304-64020 | SS316-64020 | 2" | 5 | 1.2610 | 2.40 | 2.73 | 0.74 |
| SS304-64024 | SS316-64024 | 2 1/2" | 1 | 1.4771 | 2.74 | 3.17 | 0.89 |
| SS304-64030 | SS316-64030 | 3" | 1 | 2.1050 | 3.02 | 4.00 | 0.94 |
| SS304-64040 | SS316-64040 | 4" | 1 | 3.2849 | 3.52 | 4.83 | 1.05 |



DOMESTIC AND IMPORTED FITTINGS

Stainless steel fittings are investment castings and Trenton Pipe carries a full size range that is available in stock from 1/8" – 4" in both 304 and 316 grades of stainless steel.

All fittings are threaded to NPT standard in compliance to **ASME B1.20.1**, castings are made in accordance to **ASTM A351** and all fittings are heat treated and tested in accordance to **ASTM A262**.



(800) 257-9559

Fax: (866) 706-5260

sales@trentonpipe.com